



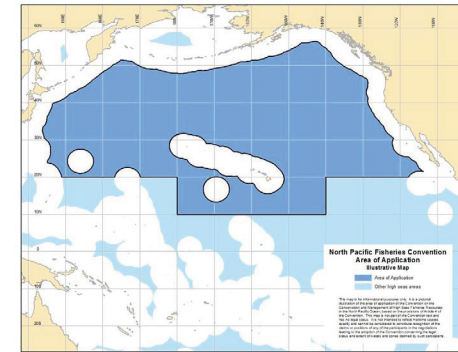
North Pacific Fisheries Commission (NPFC)

- The NPFC is an inter-governmental organization established by the Convention on the Conservation and Management of High Seas Fisheries Resources in the North Pacific Ocean, which came into force on 19 July 2015.

Our Objective

- Ensure long-term conservation and sustainable use of the fisheries resources in the Convention Area while protecting the marine ecosystems of the North Pacific Ocean

Convention Area



The shaded area is a pictorial illustration of the extent of the NPFC jurisdiction.

For the precise coordinates of the Convention Area, please refer to Article 4 of the Convention.



North Pacific Fisheries Commission



Members of the NPFC

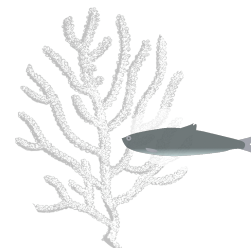
- Canada
- China
- Japan
- Republic of Korea
- Russian Federation
- Chinese Taipei
- USA
- Vanuatu

Cooperating Non-Contracting Party

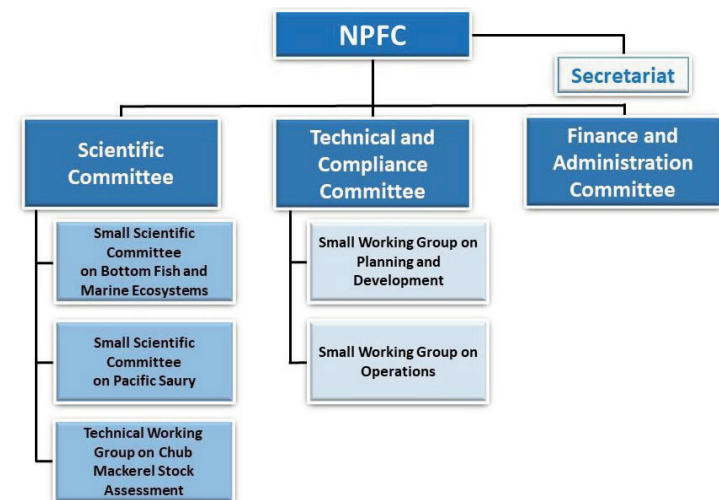
- Panama

Key Areas & Target Species

- Marine Ecosystems
- Pelagic Fisheries
- Bottom Fisheries
- Other Priority Species



NPFC Structure



The Commission



Dr. Vladimir Belyaev
Chair of the Commission



Dr. Janelle Curtis
Chair of
the Scientific Committee



Dr. Robert Day
Chair of the Technical and
Compliance Committee



Dr. Bai Li
Chair of the Finance and
Administration Committee

The Secretariat



Dr. Dae Yeon Moon
Executive Secretary



Mr. Peter Flewwelling
Compliance Manager



Dr. Aleksandr Zavolokin
Science Manager



Ms. Yuko Takamiya
Executive Assistant



Mr. Mervin Ogawa
Data Coordinator

Contact

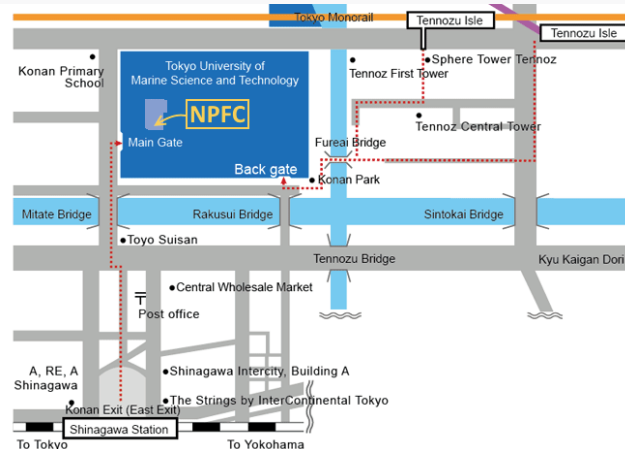
North Pacific Fisheries Commission

2F Hakuyo Hall, Tokyo University of Marine Science and Technology
4-5-7 Konan, Minato-ku, Tokyo 108-8477 JAPAN

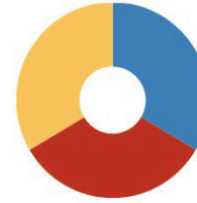
Tel +81-3-5479-8717

Fax +81-3-5479-8718

E-mail secretariat@npfc.int Website www.npfc.int



★ 3 Key Areas of Work



Science

- provides science-based recommendations for NPFC decisions, including:
 - assessment of the status of fisheries resources
 - assessment of impacts of fisheries activities on priority and other species
 - protection of vulnerable marine ecosystems (VMEs)



Compliance

- adopts legally binding Conservation and Management Measures (CMMs) for sustainable use of fisheries and protection of marine ecosystems
- provides technical and legal advice for Members
- oversees compliance of CMMs among Members

Data

- allows data-driven management
- assists in scientific analyses
- facilitates compliance schemes

📍 Active CMMs are in place on:

- Vessel Registration
- IUU Vessel List
- Interim Transshipment Procedures
- Vessels Without Nationality
- Northwestern Pacific Ocean Bottom Fisheries and VMEs
- Northeastern Pacific Ocean Bottom Fisheries and VMEs
- Chub Mackerel
- Pacific Saury
- High Seas Boarding and Inspection
- Sablefish in the Northeastern Pacific Ocean
- Japanese Sardine and Japanese Flying Squid
- Vessel Monitoring System (VMS)
- Compliance Monitoring Scheme (CMS)

🌈 Current Focus and Future Outlook

- Science:
 - Stock assessment of priority species
 - Refinement of measures for the protection of VMEs
 - Management strategy evaluation
- Compliance:
 - High Seas Boarding and Inspection
 - Observer Program
 - Fisheries Monitoring Center (FMC)
 - E-annual Report & E-IUU Vessel List
 - VMS Tools
 - Data Security

📢 Opportunities (For info, visit www.npfc.int)

- Internship
- Secondment