



North Pacific Fisheries Commission – 2019

NPFC Secretariat
North Pacific Fisheries Commission, Tokyo, Japan. Web: www.npfc.int E-mail: secretariat@npfc.int



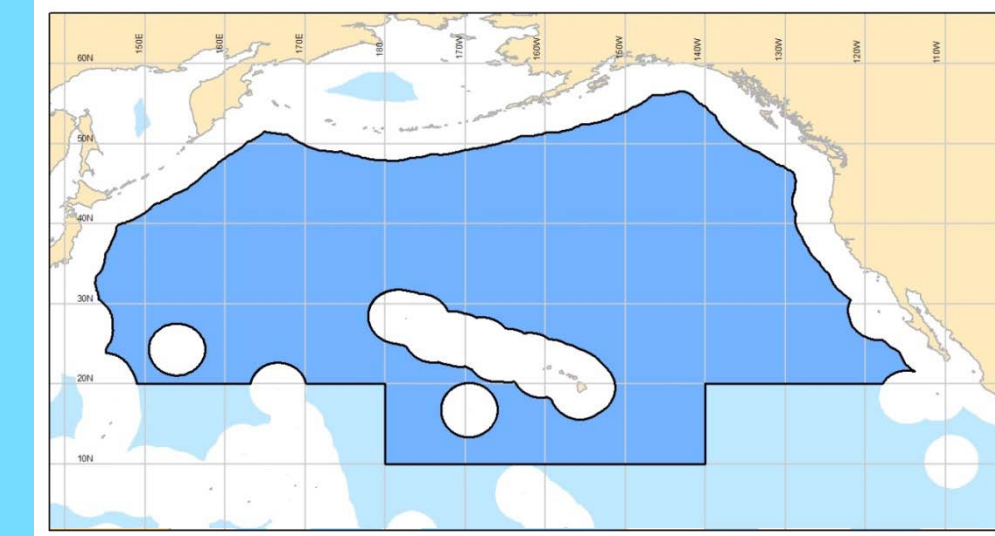
The North Pacific Fisheries Commission (NPFC) is an inter-governmental organization established by the *Convention on the Conservation and Management of High Seas Fisheries Resources in the North Pacific Ocean* entered into force on 19 July 2015.

WHO

The objective of the Convention is to ensure the long-term conservation and sustainable use of the fisheries resources in the Convention Area while protecting the marine ecosystems of the North Pacific Ocean in which these resources occur.

The NPFC has currently 8 Members - **Canada, China, Japan, Korea, Russia, Chinese Taipei, USA and Vanuatu** - and one Cooperating non-Contracting Party – **Panama**.

WHERE



NPFC Convention applies to the waters of the high seas area of the North Pacific Ocean (excluding the Bering Sea and the Sea of Okhotsk) and is bounded on the south by 10N and 20N parallels.

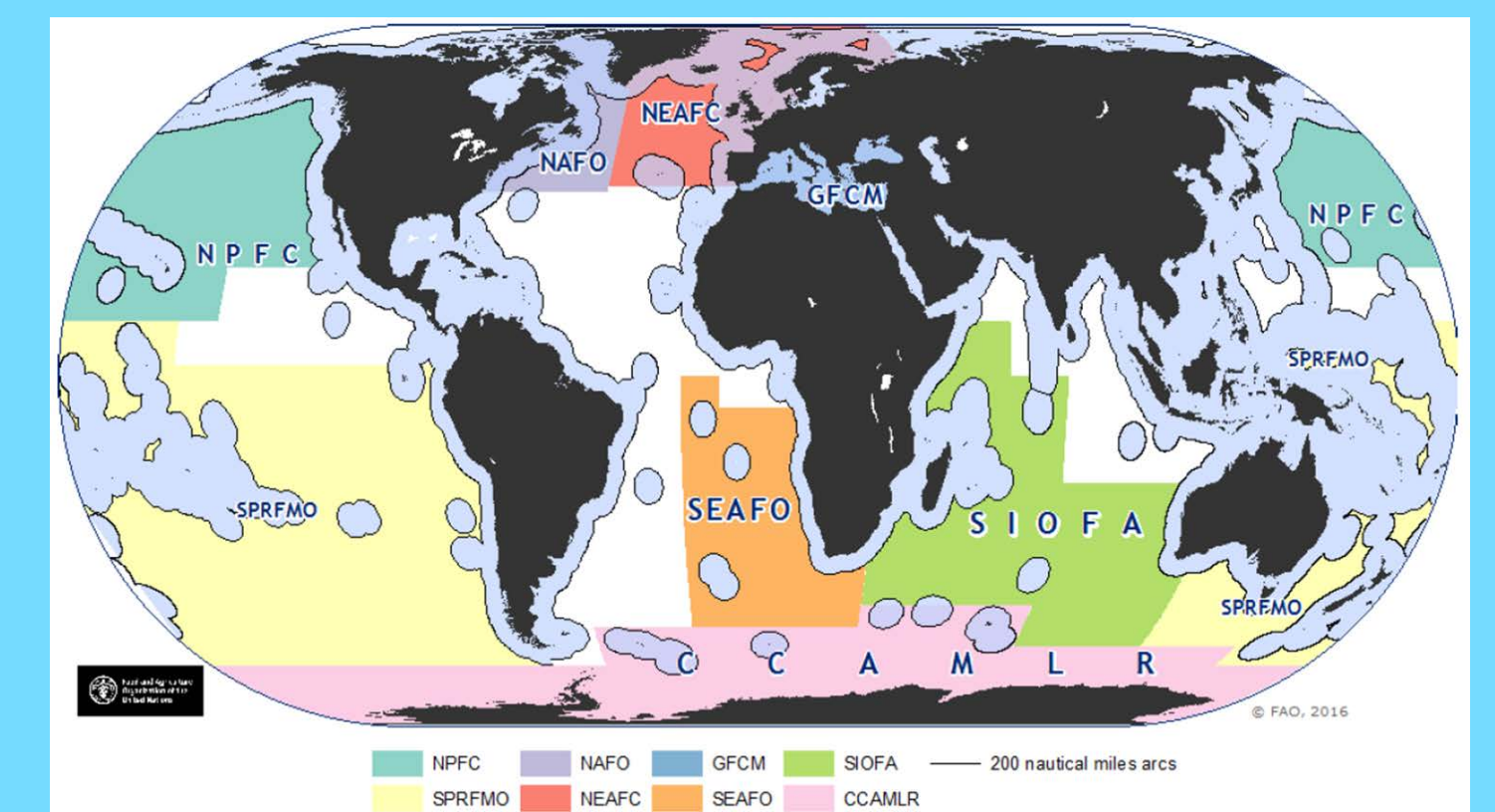
WHY

The North Pacific Fisheries Commission was formed to **bridge the gap in the management of fisheries resources and ecosystems in the North Pacific Ocean**.

FISHERIES RESOURCES COVERED BY THE CONVENTION

All fish, mollusks, crustaceans and other marine species caught by fishing vessels within the Convention Area, excluding:

- sedentary species insofar as they are subject to the sovereign rights of coastal States; and indicator species of vulnerable marine ecosystems as listed in, or adopted pursuant to the NPFC Convention;
- catadromous species;
- marine mammals, marine reptiles and seabirds; and
- other marine species already covered by pre-existing international fisheries management instruments within the area of competence of such instruments.



SCIENCE

The Scientific Committee (SC) provides a forum for consultation and cooperation among Members with respect to the evaluation and exchange of scientific information relating to the fisheries of the Convention Area and offers advice and recommendations on any issues pertaining to the scientific basis for the decisions of the Commission.

In 2017, the NPFC adopted the SC 2017-2021 Research Plan.

The SC **priority research areas** are:

- Stock assessments for target fisheries and bycatch species
- Ecosystem approach to fisheries
- Vulnerable Marine Ecosystems
- Data collection, management and security

NPFC FISHERIES:

SPECIES	WHO FISHES	2018 EFFORT and CATCH
North Pacific armorhead & Splendid alfonsino	JAPAN, KOREA, RUSSIA	7 vessels on Emperor Seamounts (3.9k mt)
Sablefish	CANADA	2017-2018: 4 vessels on Cobb seamount (116 mt)

Bottom fisheries

Pelagic fisheries

SPECIES	WHO FISHES	2018 EFFORT and CATCH
SQUIDS	CHINA, JAPAN, RUSSIA, CHINESE TAIPEI	~180 vessels (~47k mt)
PACIFIC SAURY	CHINA, JAPAN, KOREA, RUSSIA, CHINESE TAIPEI, VANUATU	~490 vessels (439k mt)
CHUB MACKEREL	CHINA, JAPAN, RUSSIA	123+ vessels (+Jap) (567k mt)
SARDINE	CHINA, JAPAN, RUSSIA	122+ vessels (+Jap) (541K mt)

During the past four years of operations, the Commission has adopted 13 legally binding **conservation and management measures (CMM)** to sustainably use the fisheries resources in the Convention Area and protect its ecosystems.

COMPLIANCE



7 CMMs are general for all fisheries:

- CMM on Vessel Registry
- CMM on IUU Vessels
- CMM on Transshipment
- CMM on Vessels without Nationality
- CMM on High Seas Boarding and Inspection
- CMM on Compliance Monitoring Scheme
- CMM on Vessel Monitoring System

6 CMMs deal with species/group of species:

- CMM on Bottom Fisheries and VME Protection in NW Pacific
- CMM on Bottom Fisheries and VME Protection in NE Pacific
- CMM on Chub Mackerel
- CMM on Pacific Saury
- CMM on Sablefish
- CMM on Japanese Sardine and Japanese Flying Squid

SC ACTIVITIES AND PROJECTS

- Meeting of the Small Scientific Committee on Pacific Saury
13-16 Nov 2019

Objective: to conduct stock assessment of Pacific saury to provide the ground for science-based CMMs to be developed by the Commission

- Meeting of the Technical Working Group on Chub Mackerel Stock Assessment
Mar 2020

Objective: to develop an operating model for testing stock assessment models of chub mackerel

- NPFC project: Observer Program

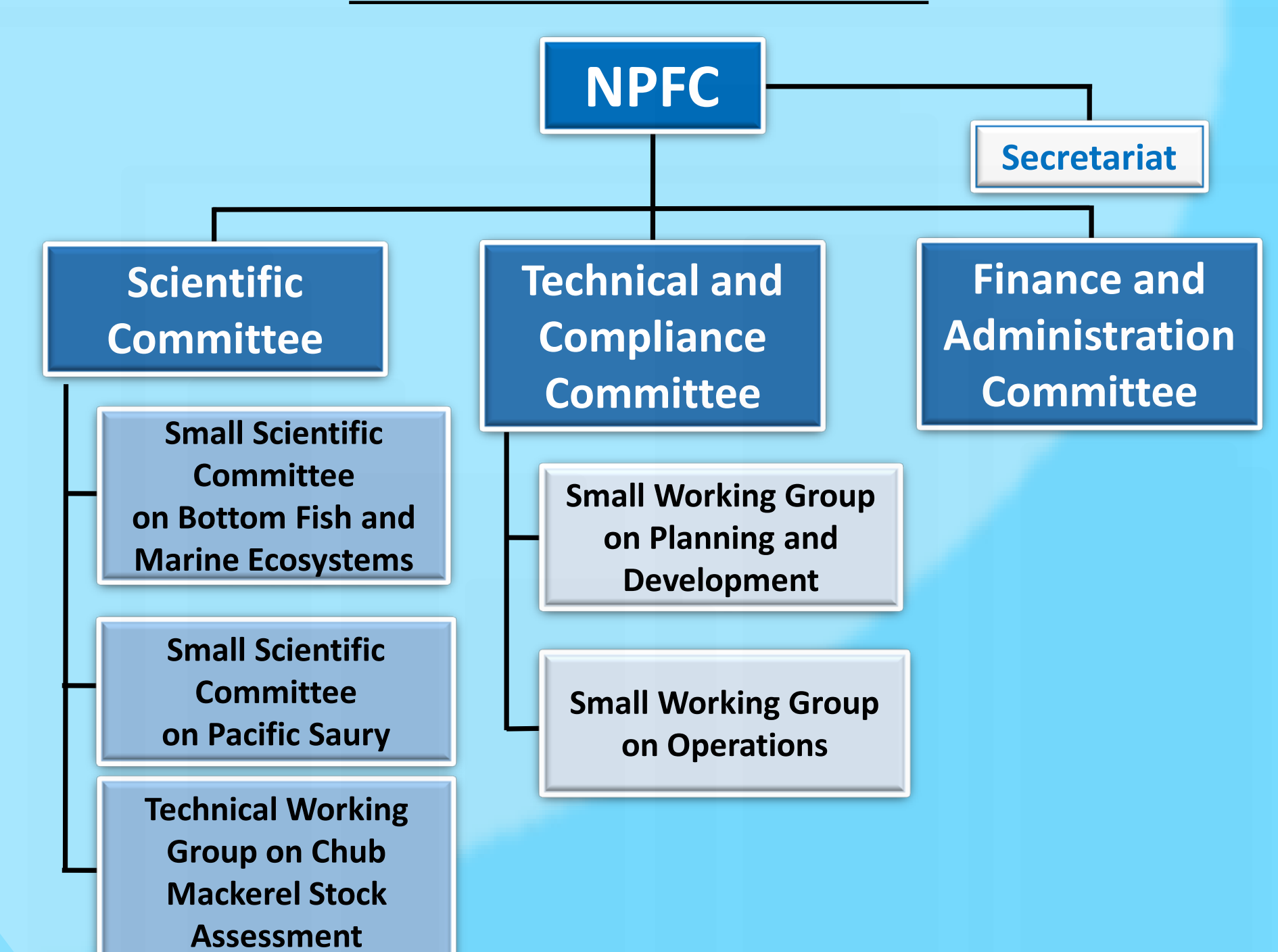
Objective: to develop a NPFC Observer Program for improvement of quality and quantity of information collected from fisheries and filling data gaps

- NPFC projects: VME Taxa Identification Guide and Fish Identification Guide

Objective: to produce a common NPFC field guides for identification of vulnerable marine ecosystems and fish species

In 2019, the Technical and Compliance Committee updated its Work Plan to move towards the establishment of a Fisheries Monitoring Center as part of the Monitoring, Control and Surveillance System to ensure compliance of Members with the NPFC regulations. There are now a total of 9 NPFC authorized patrol vessels, 1 USA, 3 Japanese, 3 Chinese Taipei and 2 Russian, with two more expected for China.

CURRENT NPFC STRUCTURE



DATA

Data-driven management of fisheries is the way to go. Decision-making based on hard facts and data has become an essential part of any successful program. The Commission bases its management approach on scientific analyses of data and evaluates compliance schemes according to the data provided by Members. Clear, verifiable and complete data will provide the platform from which the Commission will succeed in meeting its sustainable management objectives.

Current Data Management System

- NPFC Web page, including collaboration site and meeting management system
- Online vessel registry
- High Seas Boarding and Inspection Portal
- Geospatial Mapping

On-going Developments

- Electronic Annual Report
- Electronic IUU Vessel List
- Datawarehouse

Suggestions for Future Developments

- CMS and VMS Tools
- Observer Program
- Stock Assessment
- Harvest Control Rules