

Photographs of bottom at the Emperor Seamounts

Takashi Yanagimoto
National Research Institute of Far Seas
Fisheries

Yoshimi Takao, Koki Abe
National Research Institute of Fisheries
Engineering, FRA, Japan

Drop Camera Survey

- 28 times of drop camera survey were conducted in 2008.
- Drop camera could not dive over 2500m depth.
- Drop camera system have light, video camera, and digital camera.

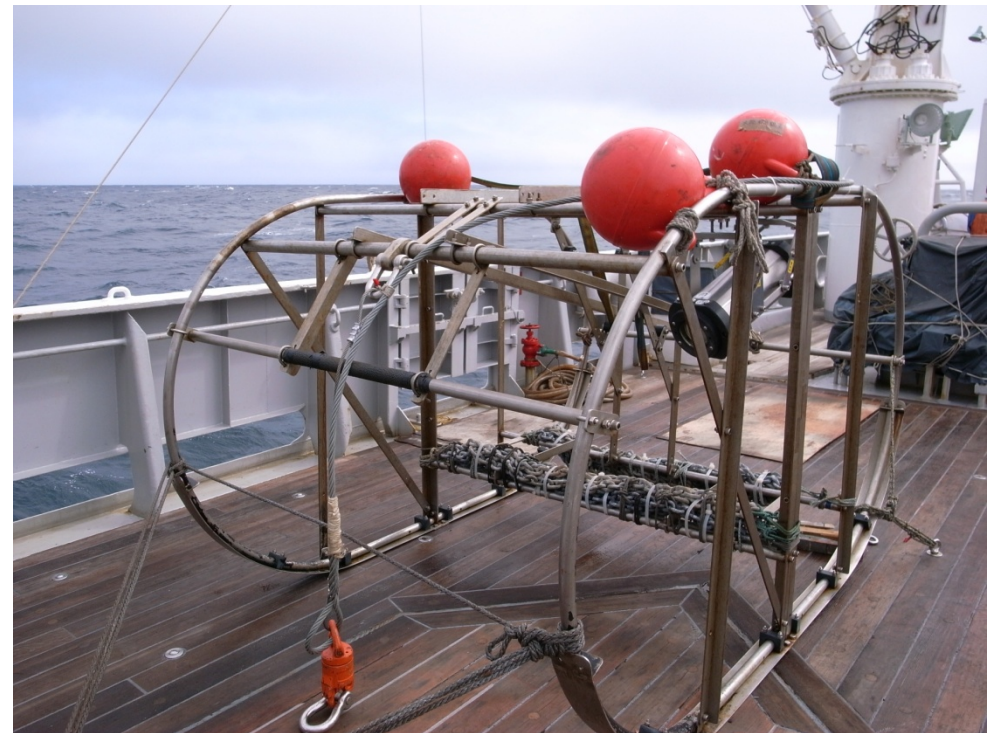


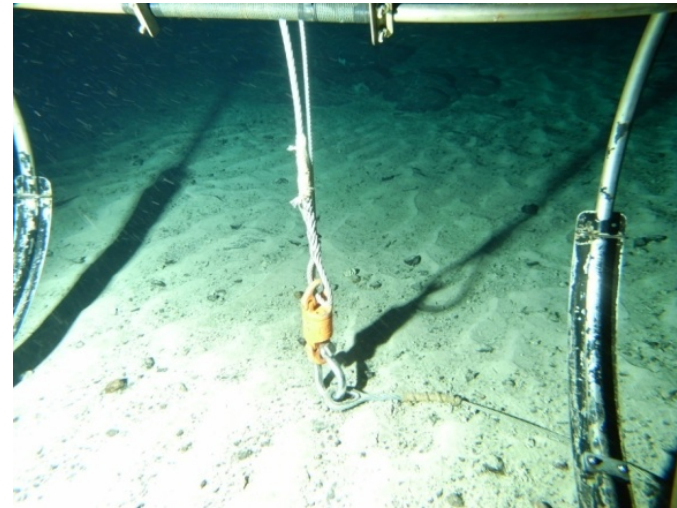
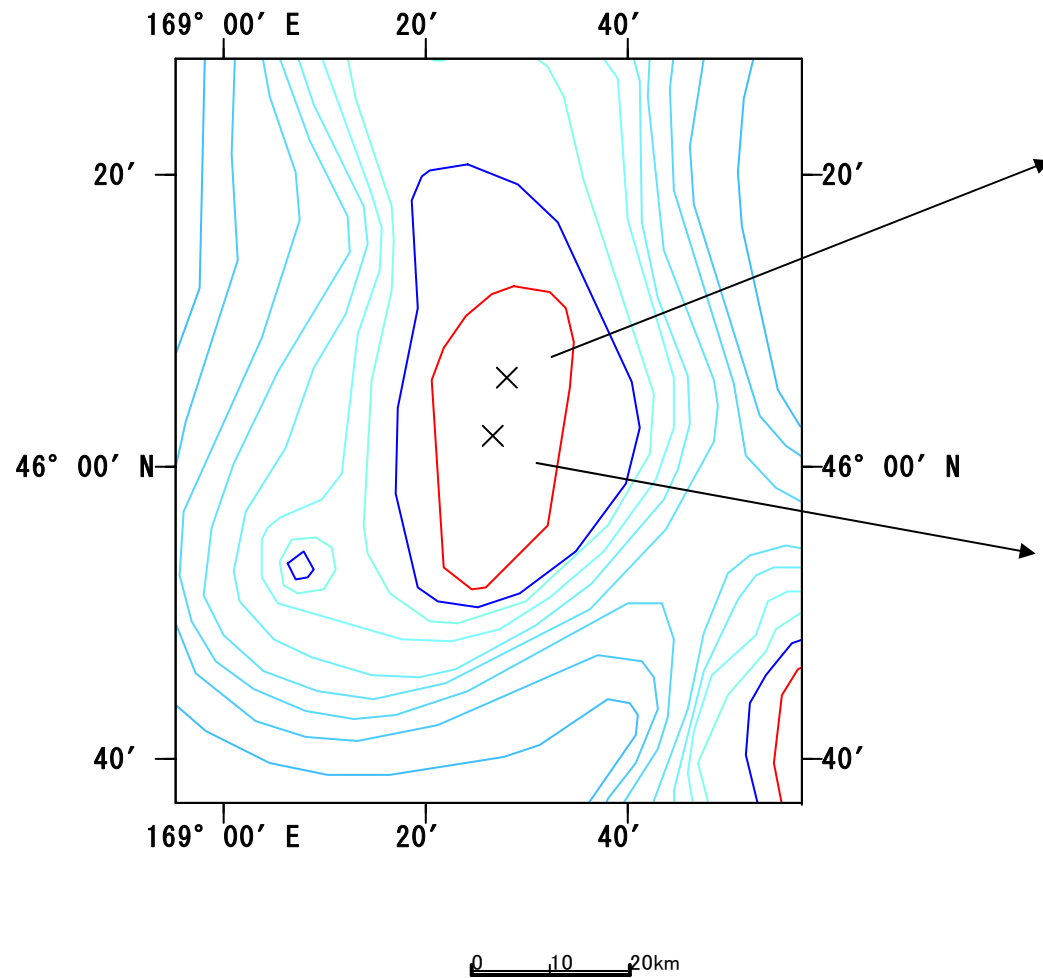
Table1 Information of ndrop camera survey in 2008.

| Station | Seamount | | GMT | | Position | | Wire Length (m) | Depth (m) | BWT (°C) | Memo |
|---------|--------------------|-------------------|-----------|----------|------------|-------------|--------------------|--------------|-------------|-----------|
| | | | Date | Time | Lat. | Long. | | | | |
| St1 | Jinmu | Observation start | 2008/6/29 | 0:40:02 | 46-06.18 N | 169-27.87 E | 1370 | 1279.07 | 2.23 | Video × |
| | | Observation stop | 2008/6/29 | 1:13:16 | 46-06.33 N | 169-29.00 E | | 1278.93 | 2.23 | Camera○ |
| St2 | Jinmu | Observation start | 2008/6/30 | 2:40:46 | 46-02.19 N | 169-26.63 E | 1420 | 1308.95 | 2.18 | Video × |
| | | Observation stop | 2008/6/30 | 2:51:49 | 46-02.19 N | 169-26.68 E | | 1309.09 | 2.21 | Camera○ |
| St3 | N bank of Suiko | Observation start | 2008/7/2 | 0:26:32 | 45-41.48 N | 170-01.27 E | 1450 | 1365.78 | 2.16 | Video × |
| | | Observation stop | 2008/7/2 | 0:36:32 | 45-41.46 N | 170-01.25 E | | 1365.71 | 2.15 | Camera○ |
| St4 | S bank of Suiko | Observation start | 2008/7/3 | 22:16:49 | 44-30.54 N | 170-13.20 E | 1285 | 1169.57 | 2.27 | Video○ |
| | | Observation stop | 2008/7/3 | 22:26:48 | 44-30.49 N | 170-13.18 E | | 1169.6 | 2.27 | Camera○ |
| St5 | S bank of Suiko | Observation start | 2008/7/5 | 0:12:58 | 44-34.10 N | 170-16.79 E | 1270 | 1167.73 | 2.47 | Video○ |
| | | Observation stop | 2008/7/5 | 0:23:36 | 44-34.12 N | 170-16.89 E | | 1167.38 | 2.47 | Camera○ |
| St6 | Showa | Observation start | 2008/7/6 | 22:37:04 | 43-05.21 N | 170-29.83 E | 1760 | 1657.83 | 2.04 | Video○ |
| | | Observation stop | 2008/7/6 | 22:47:09 | 43-05.26 N | 170-29.95 E | | 1657.79 | 2.11 | Camera○ |
| St7 | Youmei | Observation start | 2008/7/8 | 22:18:25 | 42-22.71 N | 170-30.47 E | 1470 | 1387.21 | 2.44 | Video × |
| | | Observation stop | 2008/7/8 | 22:28:26 | 42-22.72 N | 170-30.48 E | | 1386.72 | 2.44 | Camera○ |
| St8 | Youmei | Observation start | 2008/7/10 | 1:06:26 | 42-25.52 N | 170-38.65 E | 1950 | 1853.12 | 2.09 | Video○ |
| | | Observation stop | 2008/7/10 | 1:12:00 | 42-25.51 N | 170-38.67 E | | 1853.05 | 2.1 | Camera × |
| St9 | Youmei | Observation start | 2008/7/11 | 0:02:34 | 42-26.79 N | 170-40.72 E | 1980 | 1852.57 | 2.06 | Video○ |
| | | Observation stop | 2008/7/11 | 0:17:28 | 42-26.80 N | 170-40.73 E | | 1852.53 | 2.06 | Camera × |
| St10 | C-H | Observation stop | 2008/7/27 | 2:36:21 | 30-22.38 N | 177-33.68 E | 570 | 346.28 | 13.47 | No Camera |
| | | Observation start | 2008/7/27 | 5:50:08 | 30-22.80 N | 177-32.94 E | | 508.73 | 10.6 | Video○ |
| St11 | C-H | Observation stop | 2008/7/27 | 6:00:08 | 30-22.78 N | 177-32.89 E | 750 | 508.59 | 10.61 | Camera × |
| | | Observation start | 2008/7/27 | 21:43:43 | 30-22.51 N | 177-34.75 E | | 686.36 | 6.54 | Video○ |
| St12 | C-H | Observation stop | 2008/7/27 | 21:54:17 | 30-22.51 N | 177-34.76 E | 770 | 685.15 | 6.59 | Camera○ |
| | | Observation start | 2008/7/28 | 21:54:07 | 31-02.32 N | 175-55.26 E | | 756.86 | 5.55 | Video○ |

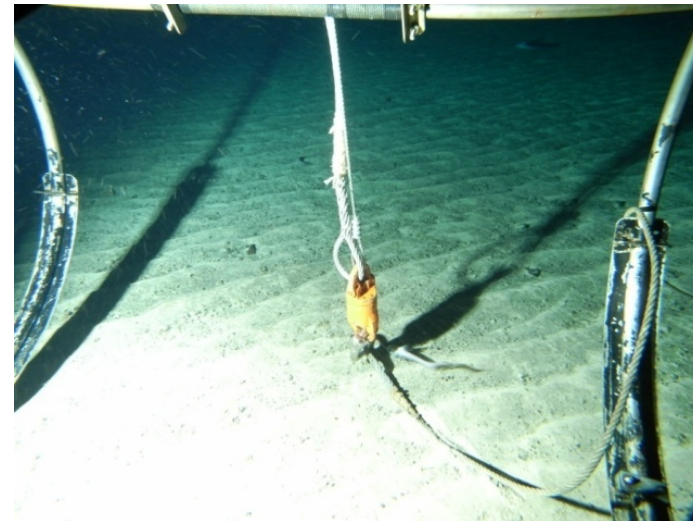
Table1 Continued.

| Station | Seamount | | GMT | | Position | | | Wire Length (m) | Depth (m) | BWT (°C) | Memo | |
|---------|----------|-------------------|-----------|----------|----------|-------|-----------|--------------------|--------------|-------------|----------|----------|
| | | | Date | Time | Lat. | Long. | | | | | | |
| St13 | Colahan | Observation stop | 2008/7/28 | 22:04:08 | 31-02.34 | N | 175-55.21 | E | 707.47 | 6.28 | Camera × | |
| | | Observation start | 2008/7/29 | 1:40:03 | 30-59.78 | N | 175-52.84 | E | 1150 | 1070.82 | 3.64 | Video ○ |
| St14 | Colahan | Observation stop | 2008/7/29 | 1:50:19 | 30-59.76 | N | 175-52.84 | E | | 1070.3 | 3.53 | Camera ○ |
| | | Observation start | 2008/7/31 | 0:00:34 | 32-06.23 | N | 173-01.19 | E | 630 | 560.88 | 6.02 | Video ○ |
| St16 | Kammu | Observation stop | 2008/7/31 | 0:10:37 | 32-06.22 | N | 173-01.20 | E | | 560.78 | 6.01 | Camera ○ |
| | | Observation start | 2008/7/31 | 6:40:06 | 32-07.43 | N | 172-58.86 | E | 770 | 679.85 | 4.89 | Video ○ |
| St17 | Kammu | Observation stop | 2008/7/31 | 6:50:07 | 32-07.46 | N | 172-58.88 | E | | 679.3 | 4.82 | Camera ○ |
| | | Observation start | 2008/8/1 | 21:22:21 | 32-09.79 | N | 172-56.75 | E | 760 | 688.91 | 4.25 | Video ○ |
| St19 | Kammu | Observation stop | 2008/8/1 | 21:32:32 | 32-09.77 | N | 172-56.72 | E | | 688.05 | 4.18 | Camera ○ |
| | | Observation start | 2008/8/2 | 0:06:58 | 32-10.00 | N | 172-57.87 | E | 777 | 694.6 | 4.17 | Video ○ |
| St20 | Kammu | Observation stop | 2008/8/2 | 0:17:02 | 32-09.99 | N | 172-57.84 | E | | 706.72 | 4.16 | Camera ○ |
| | | Observation start | 2008/8/3 | 21:14:02 | 32-41.49 | N | 172-16.60 | E | 400 | 406.3 | 8.55 | Video ○ |
| St22 | Yuryaku | Observation stop | 2008/8/3 | 21:24:10 | 32-41.50 | N | 172-16.60 | E | | 406.26 | 8.41 | Camera × |
| | | Observation start | 2008/8/3 | 23:23:46 | 32-41.50 | N | 172-17.24 | E | 412 | 410.26 | 8.35 | Video ○ |
| St23 | Yuryaku | Observation stop | 2008/8/3 | 23:33:49 | 32-41.49 | N | 172-17.24 | E | | 410.19 | 8.36 | Camera ○ |
| | | Observation start | 2008/8/4 | 21:42:24 | 34-57.29 | N | 171-38.70 | E | 1299 | 1299.44 | 2.76 | Video ○ |
| St24 | Koko | Observation stop | 2008/8/4 | 21:52:41 | 34-57.35 | N | 171-38.79 | E | | 1299.33 | 2.75 | Camera ○ |
| | | Observation start | 2008/8/5 | 1:21:31 | 34-56.21 | N | 171-36.98 | E | 1075 | 1082.58 | 3.29 | Video ○ |
| St25 | Koko | Observation stop | 2008/8/5 | 1:31:31 | 34-56.20 | N | 171-36.97 | E | | 1081.22 | 3.22 | Camera ○ |
| | | Observation start | 2008/8/6 | 0:21:26 | 35-27.00 | N | 171-47.20 | E | 409 | 415.82 | 10.86 | Video ○ |
| St27 | Koko | Observation stop | 2008/8/5 | 23:46:58 | 35-26.98 | N | 171-47.05 | E | | 415.79 | 10.81 | Camera ○ |
| | | Observation start | 2008/8/6 | 2:07:54 | 35-27.52 | N | 171-47.17 | E | 490 | 416.83 | 9.86 | Video ○ |
| St28 | Koko | Observation stop | 2008/8/6 | 2:17:58 | 35-27.54 | N | 171-47.18 | E | | 416.76 | 9.92 | Camera ○ |
| | | Observation start | 2008/8/6 | 21:22:26 | 35-36.73 | N | 171-02.98 | E | 750 | 725.8 | 4.56 | Video ○ |
| St29 | Koko | Observation stop | 2008/8/6 | 21:32:28 | 35-36.75 | N | 171-02.98 | E | | 725.08 | 4.47 | Camera ○ |
| | | Observation start | 2008/8/7 | 0:24:51 | 35-36.73 | N | 171-05.62 | E | 675 | 645.19 | 5.33 | Video ○ |
| St30 | Koko | Observation stop | 2008/8/6 | 23:39:02 | 35-36.50 | N | 171-05.48 | E | | 644.46 | 5.01 | Camera ○ |
| | | Observation start | 2008/8/7 | 0.898021 | 35-43.00 | N | 171-26.97 | E | 1175 | 1173.08 | 3.22 | Video ○ |

Jinmu Seamount

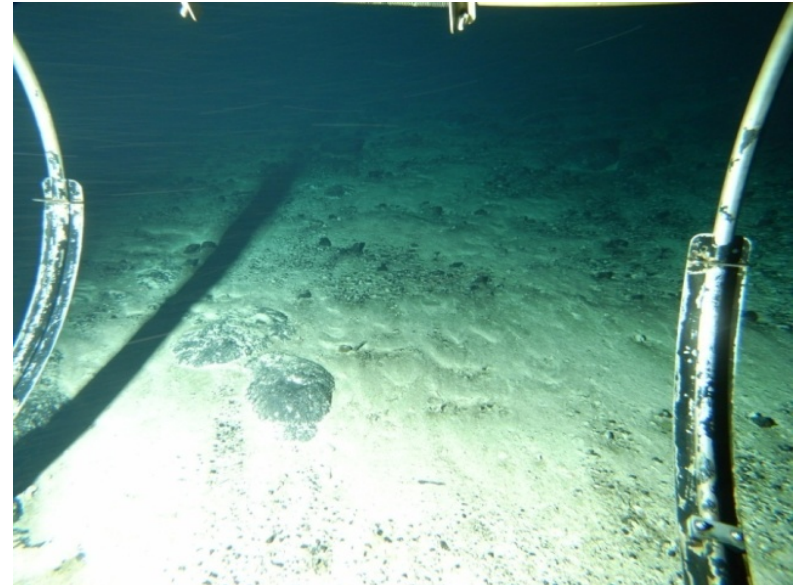
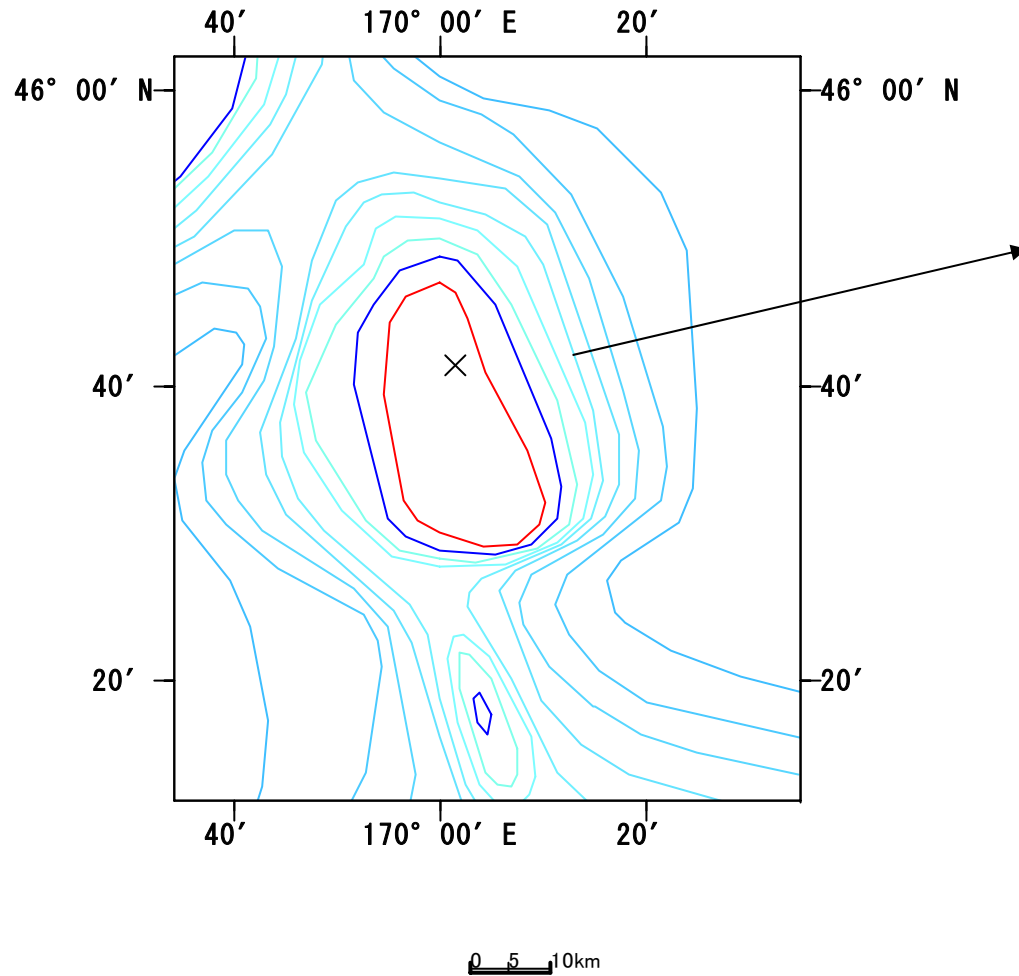


St1 2008/6/29,
46-06.18N, 169-27.87E,
Depth: 1279.07m



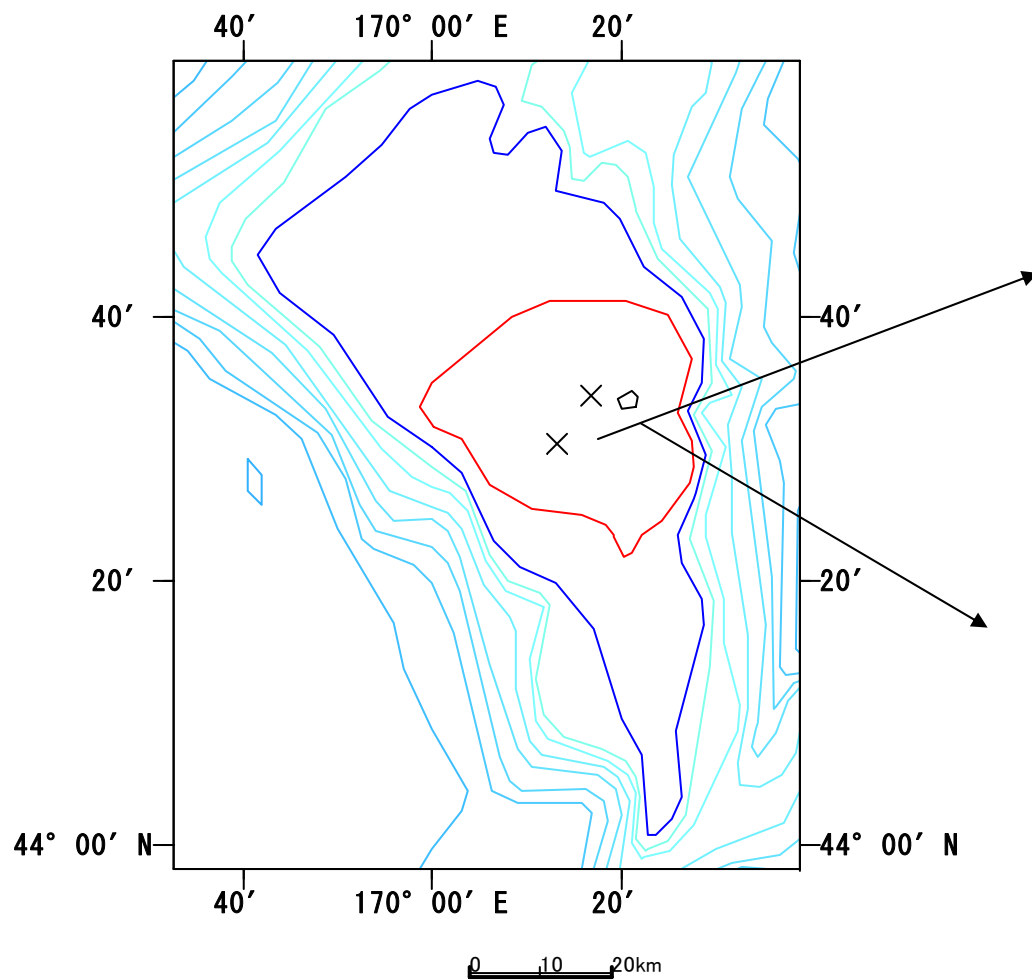
St2 2008/6/30,
46-02.12N, 169-26.17E,
Depth: 1308.95m

North bank of Suiko (Seamount A)

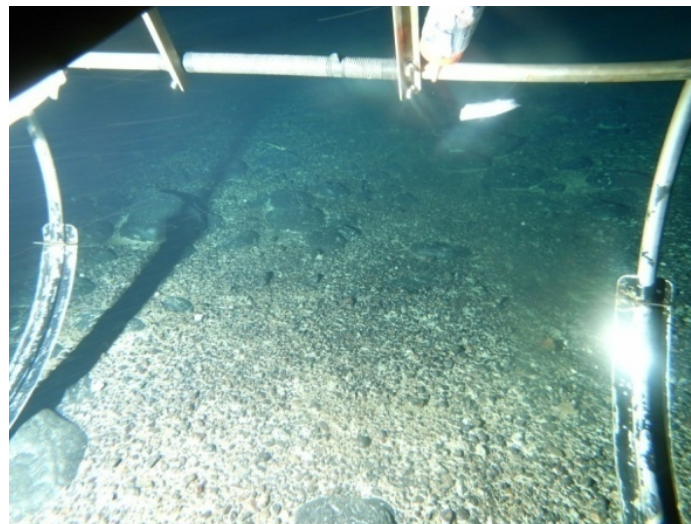


St3 2008/7/2,
45-41.56N, 170-01.47E,
Depth: 1365.78m

South bank of Suiko

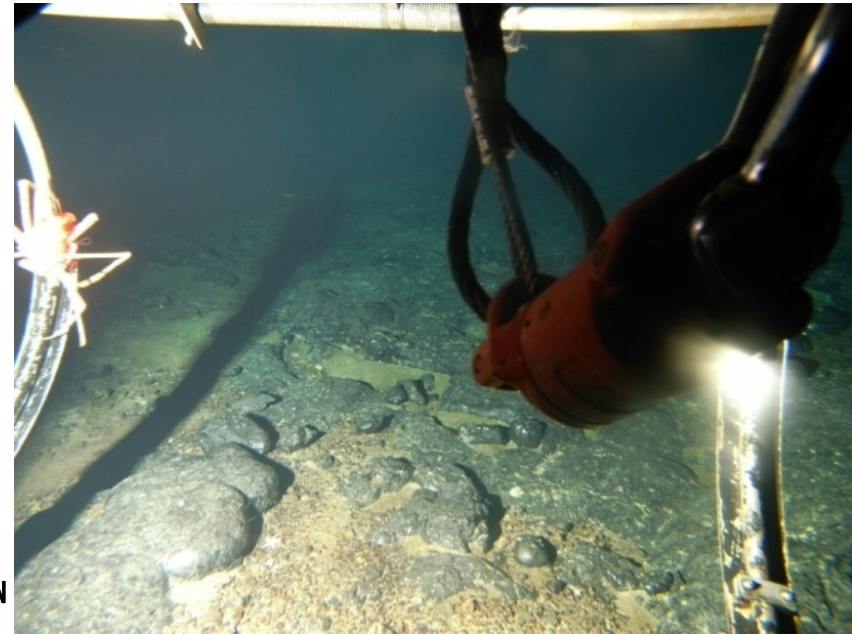
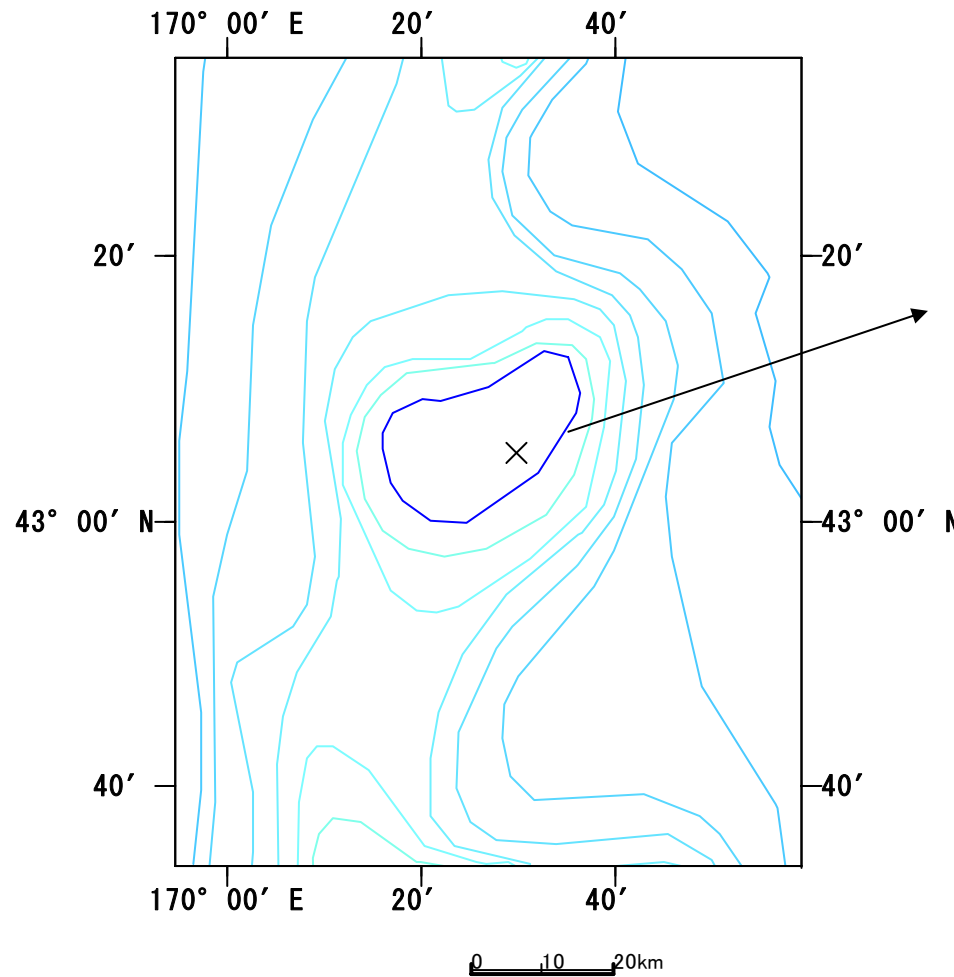


St4 2008/7/4,
44-30.72N, 170-12.55E, Depth:
1169.57m



St5 2008/7/5,
44-34.06N, 170-16.77E, Depth: 1167.73m

Showa (Seamount B)

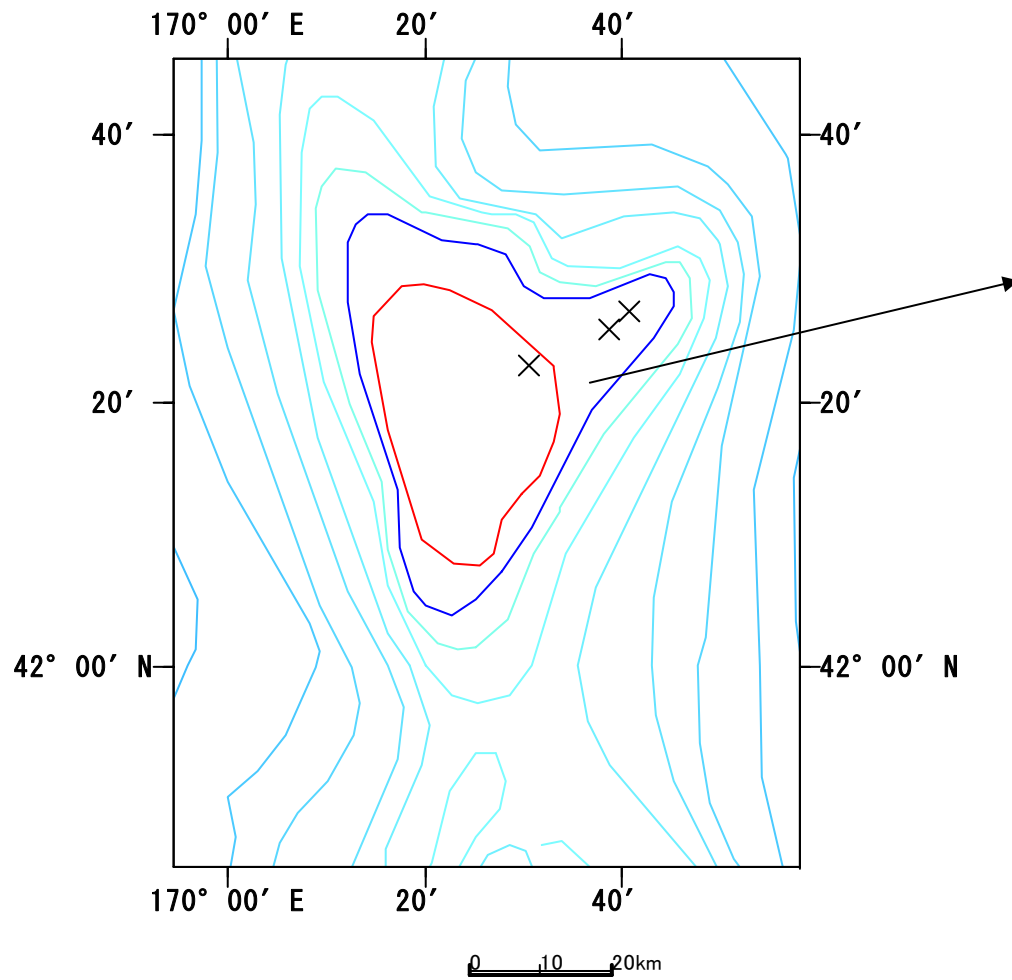


St6 2008/7/7

43-05.01N, 170-29.60E,

Depth: 1657.83m

Youmei Seamount

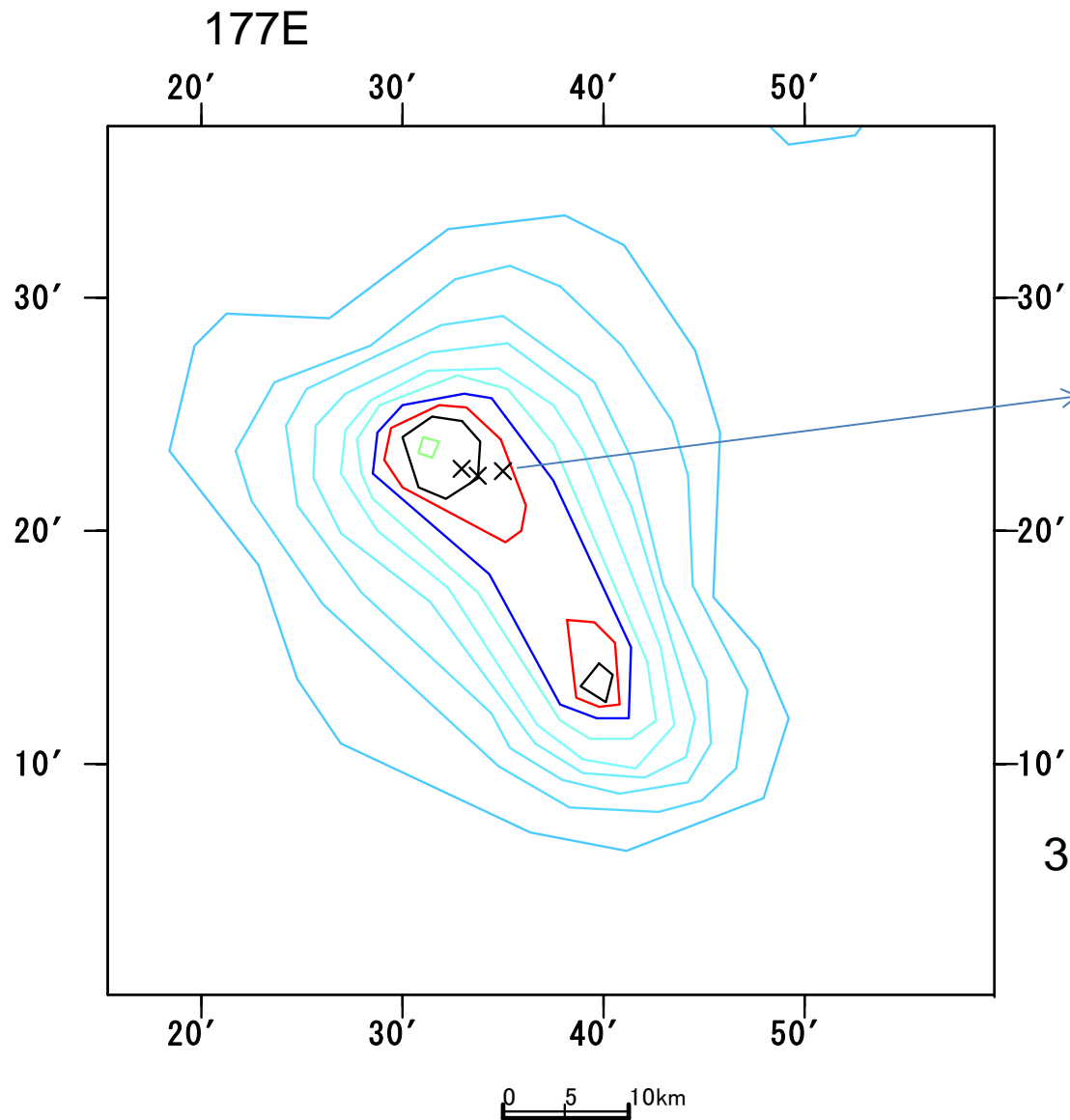


St7 2008/7/9

42-22.64N, 170-30.40E,

Depth: 1387.21m

C-H Seamount

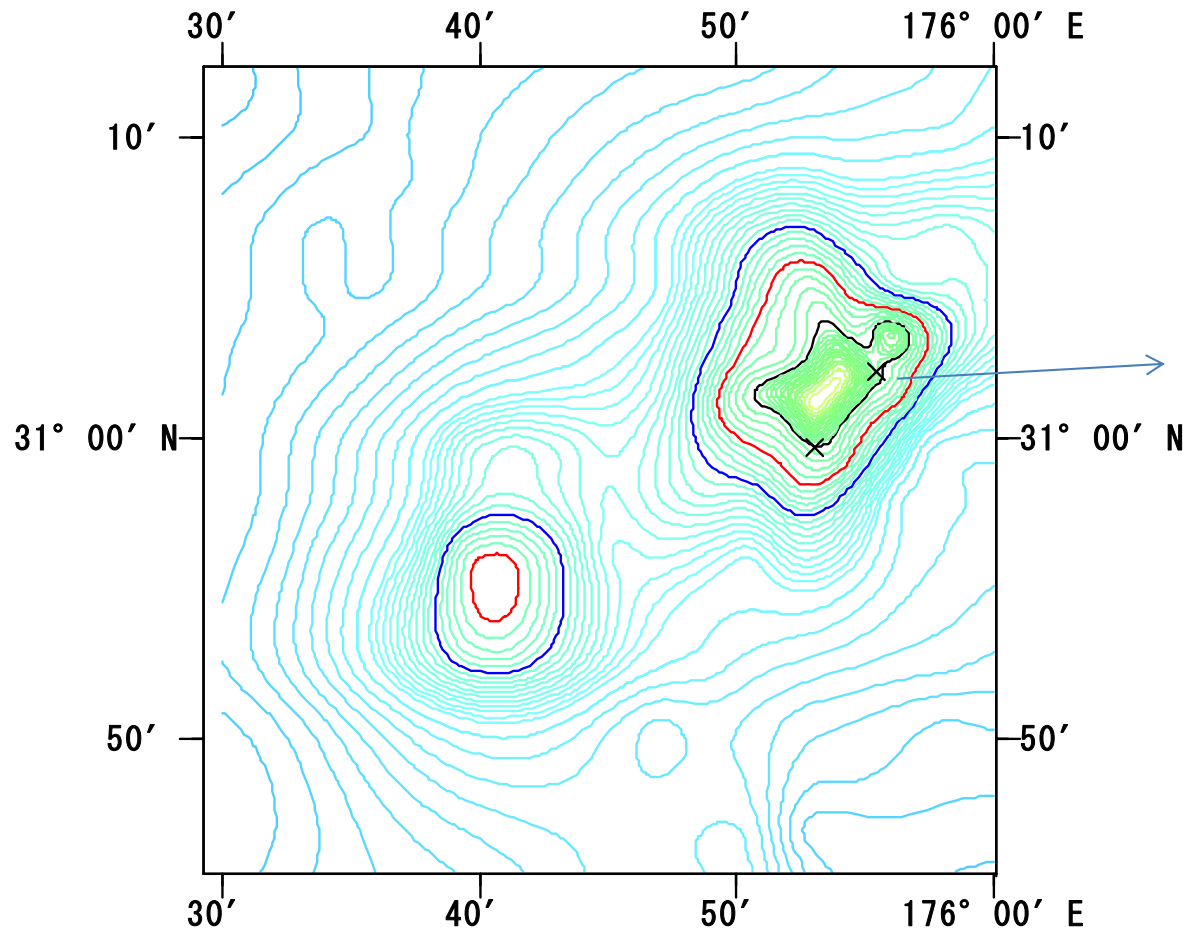


St12 2008/7/28
30-22.51N, 177-35.00E
Depth: 686.36m



30N
Depth Line
Black: 1000m
Red: 1500m
Blue: 2000m

Colahan Seamount



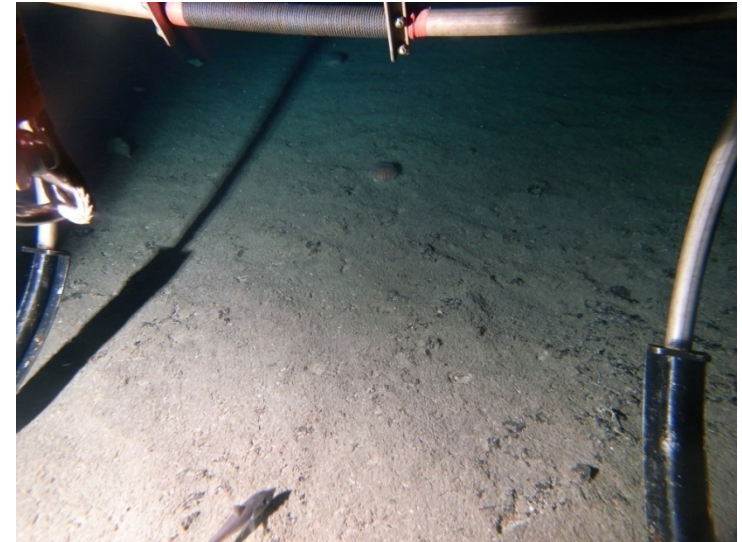
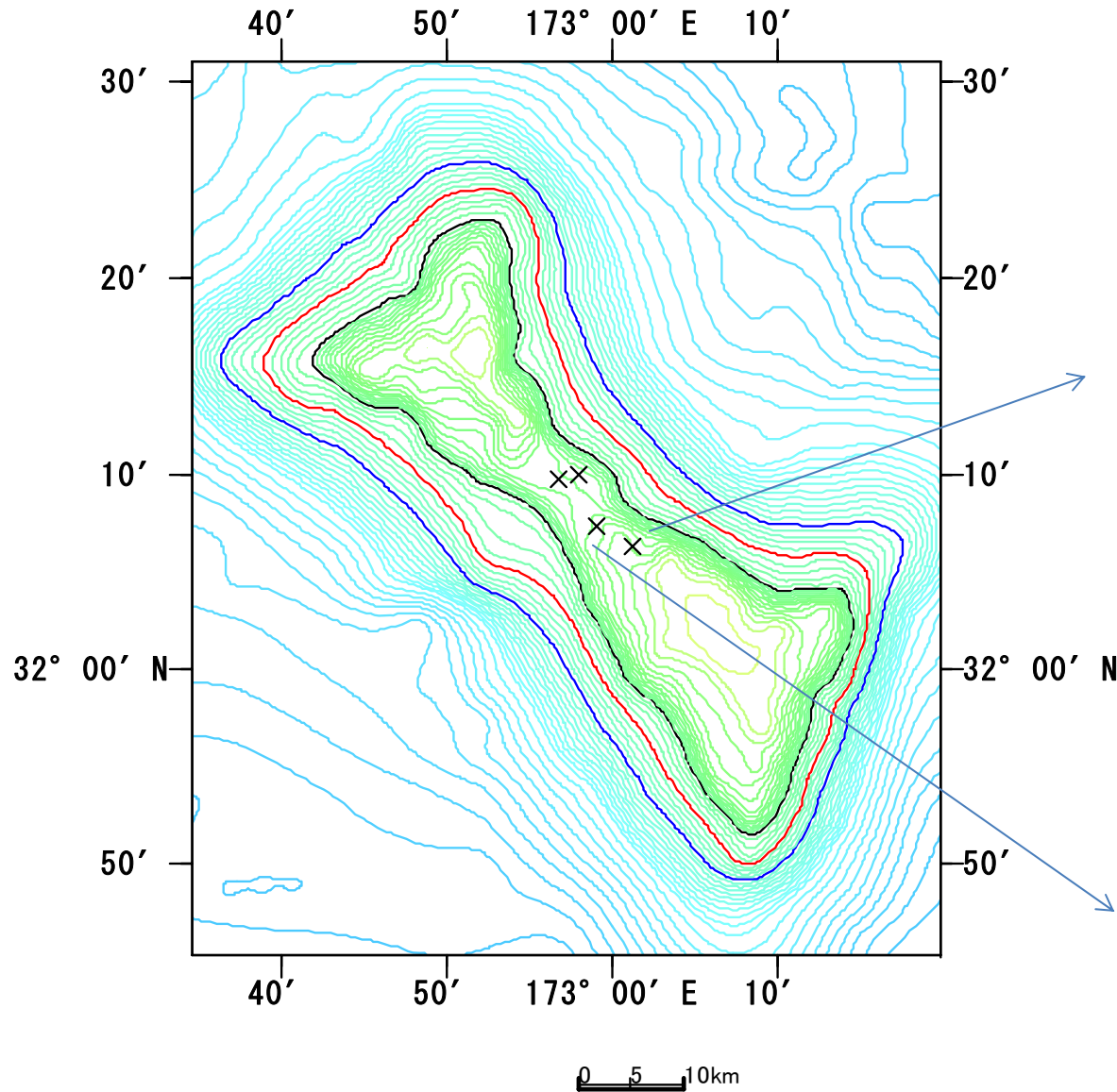
St14 2008/7/29
31-02.24N, 175-55.46E
Depth: 756.86m



Depth Line
Black: 1000m
Red: 1500m
Blue: 2000m

Kammu Seamount 1

St16 2008/7/31
32-06.28N, 173-01.27E
560.88m

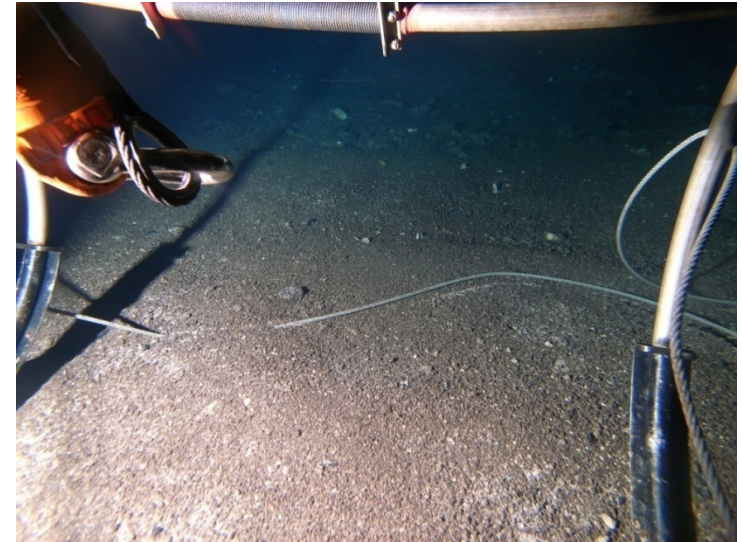
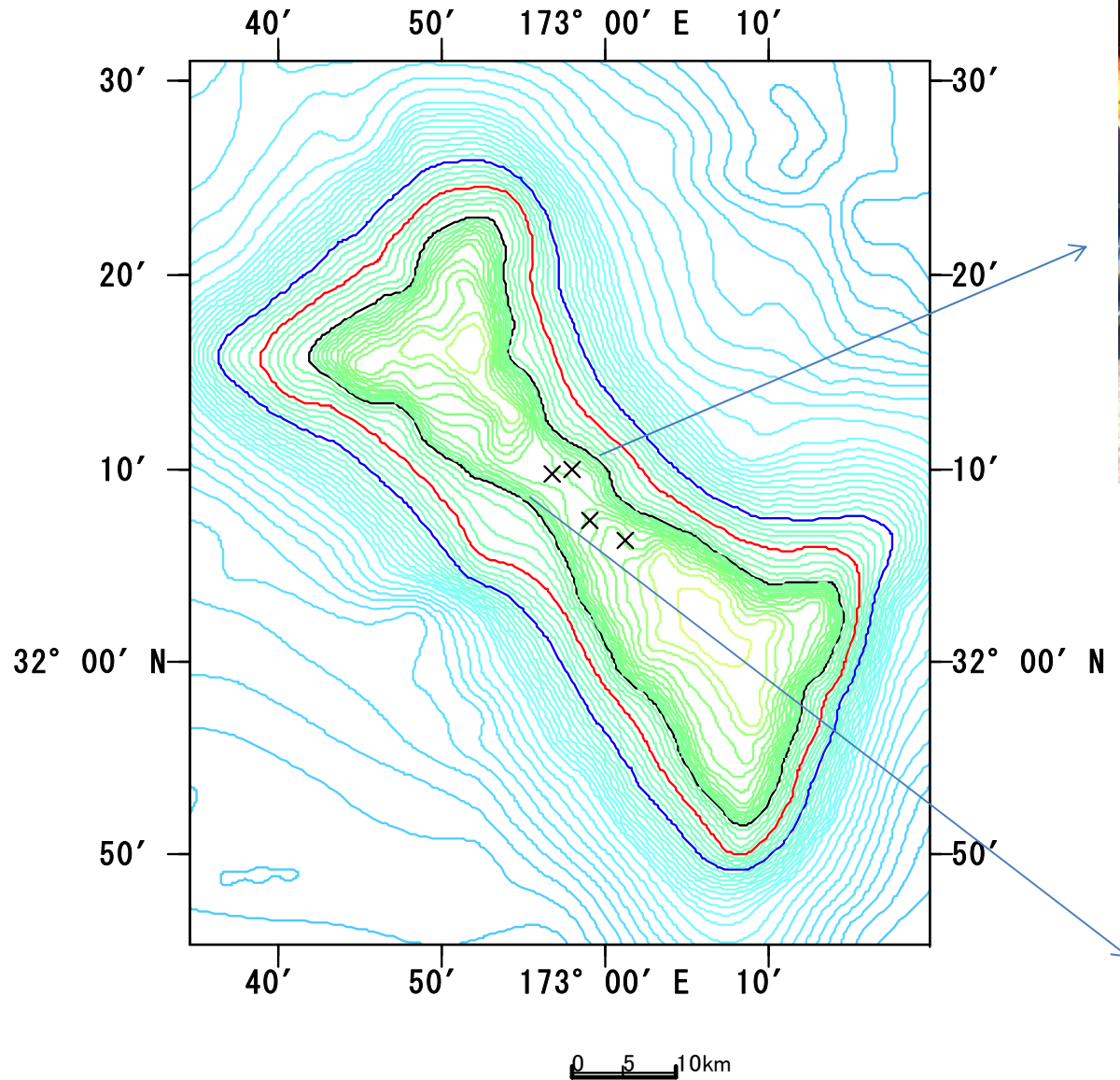


St17 2008/7/31
32-07.32N, 172-59.11E
679.85m



Kammu Seamount 2

St20 2008/8/2
32-09.99N, 172-57.92E
694.6m



St19 2008/8/2
32-09.75N, 172-56.75E
688.91m

