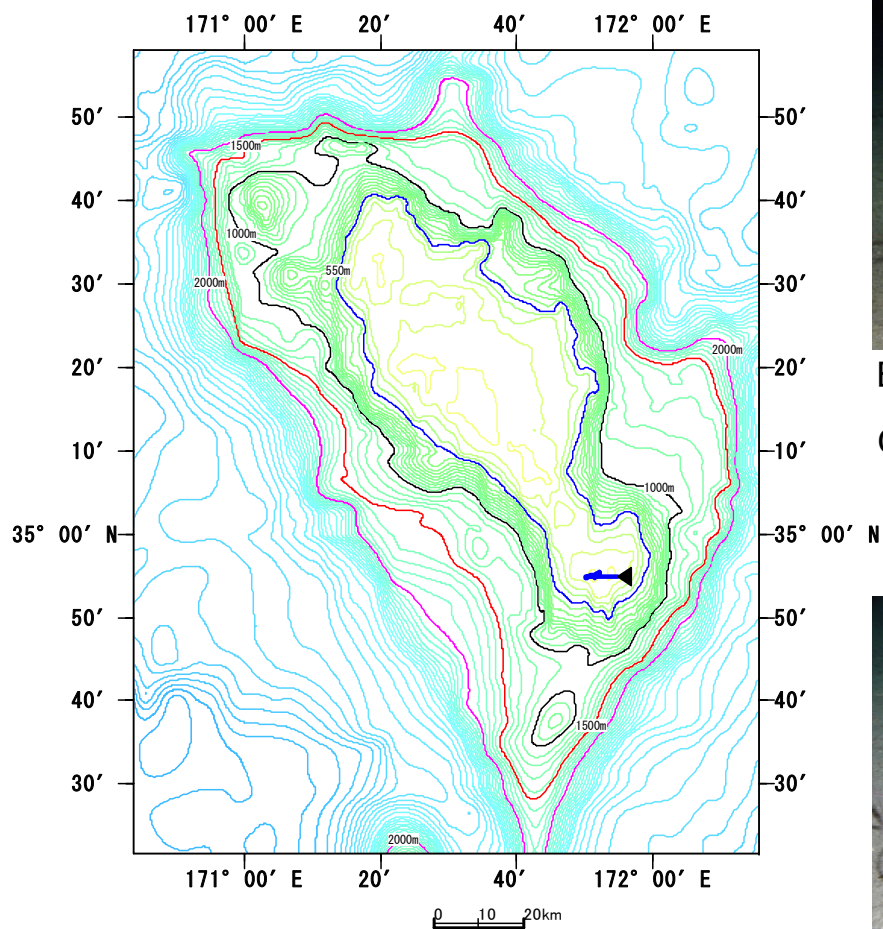


Koko Seamount St12



Date: 2006/9/17

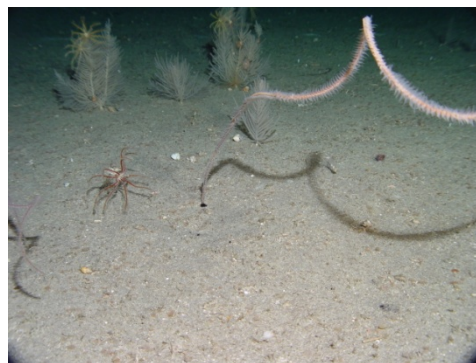
Position: 34-55.04N, 171-50.42E

Observed distance: 1.09528km



Ex. *Callogorgia* sp.

Gorgonacea spp.



Ex. *Cirripathes* sp.

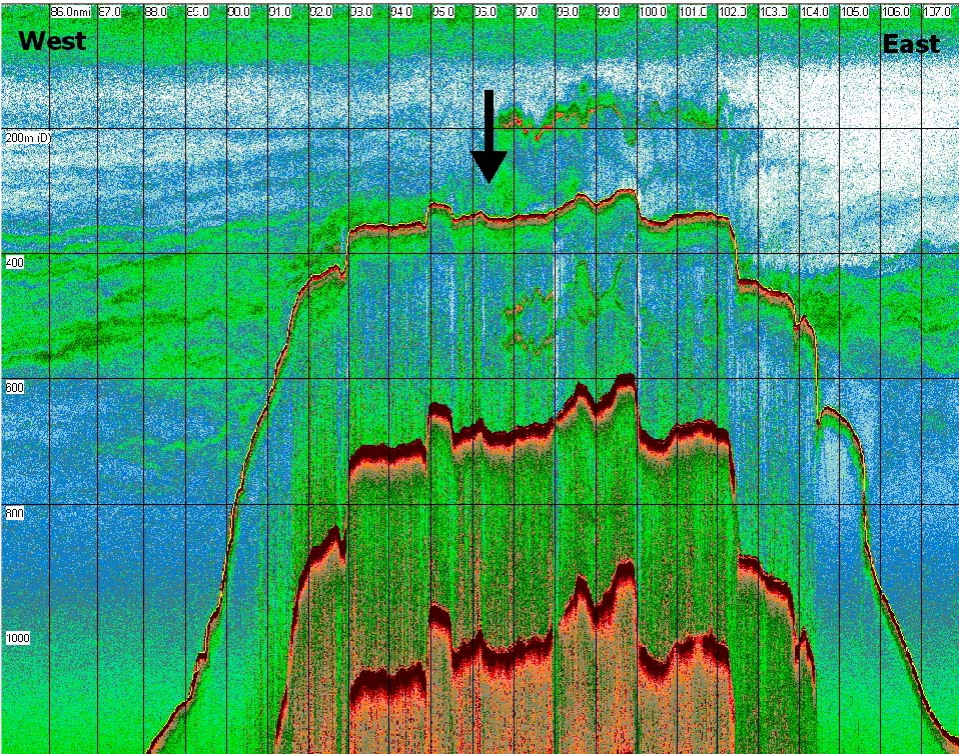
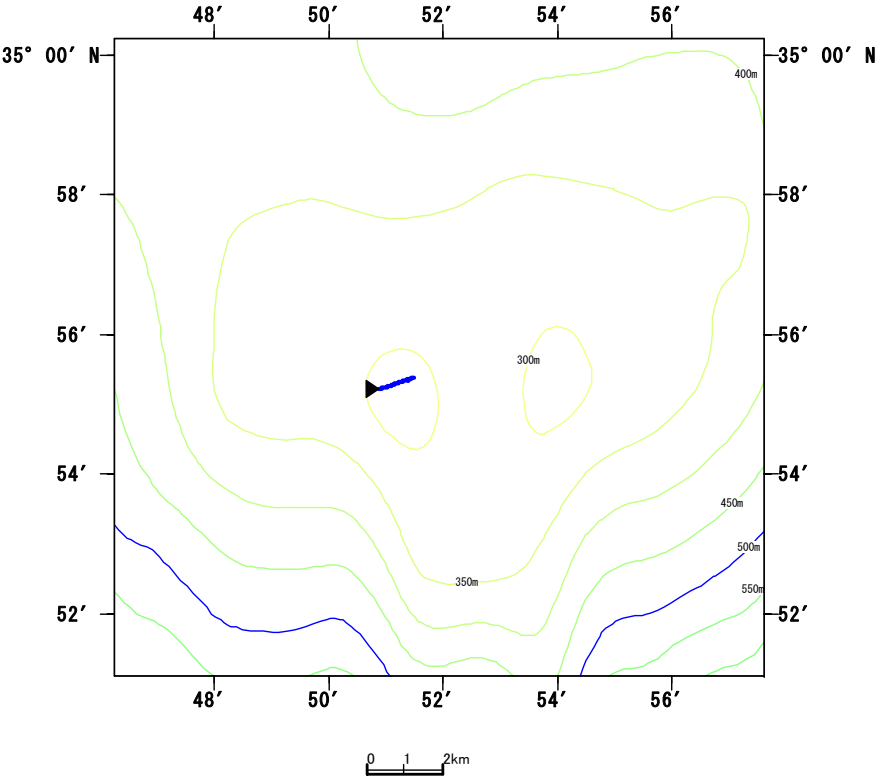
Antipatharia spp.

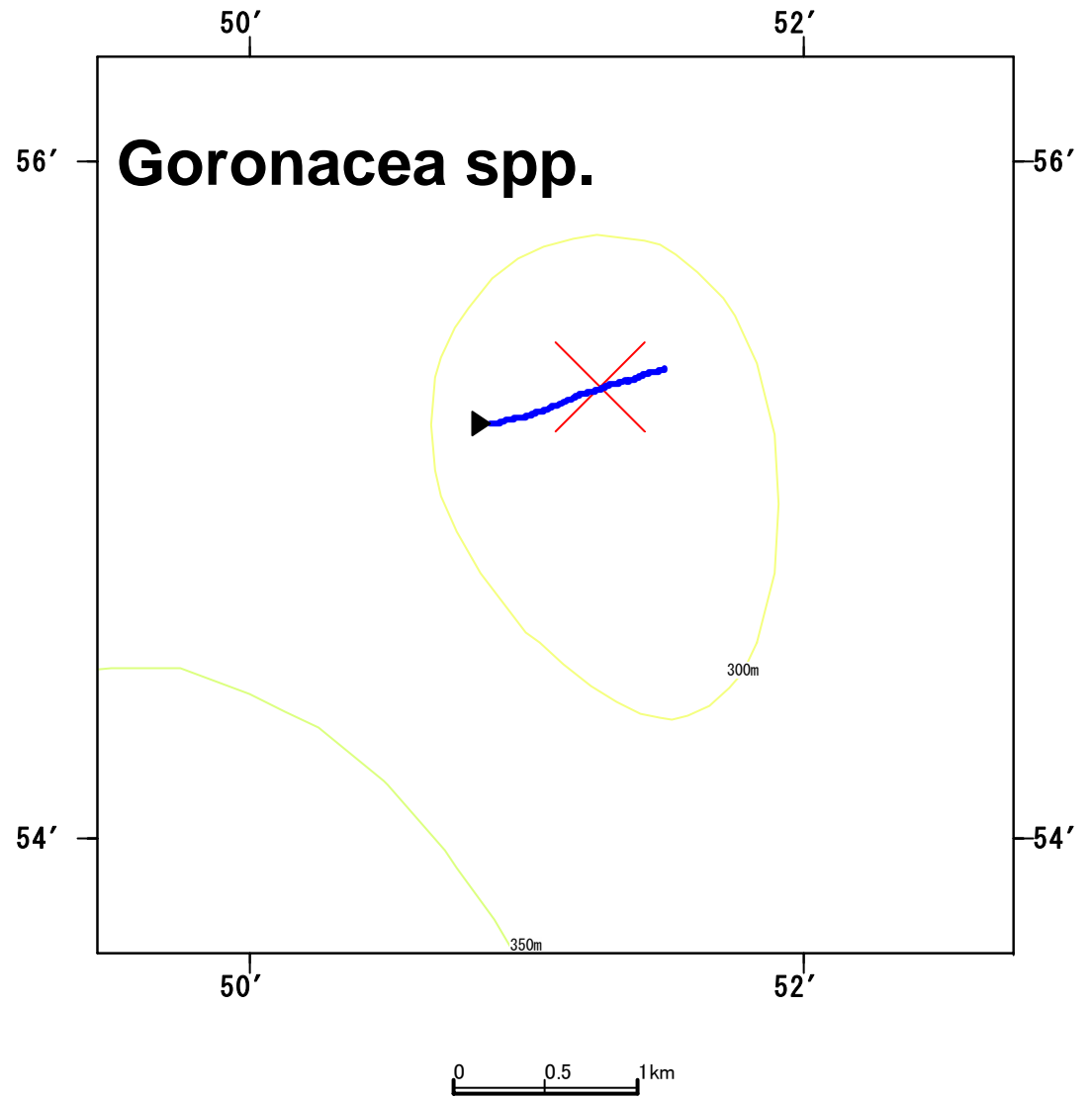
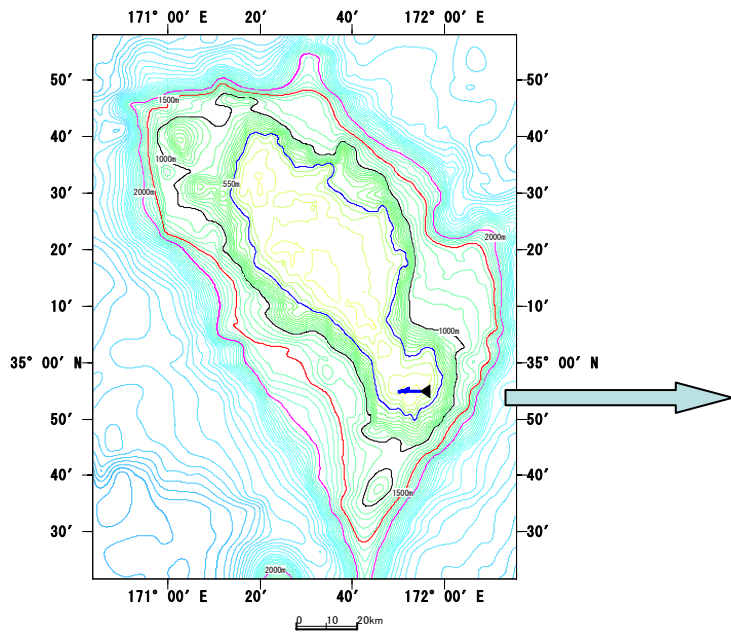


Ex. Alcyoniidae sp.

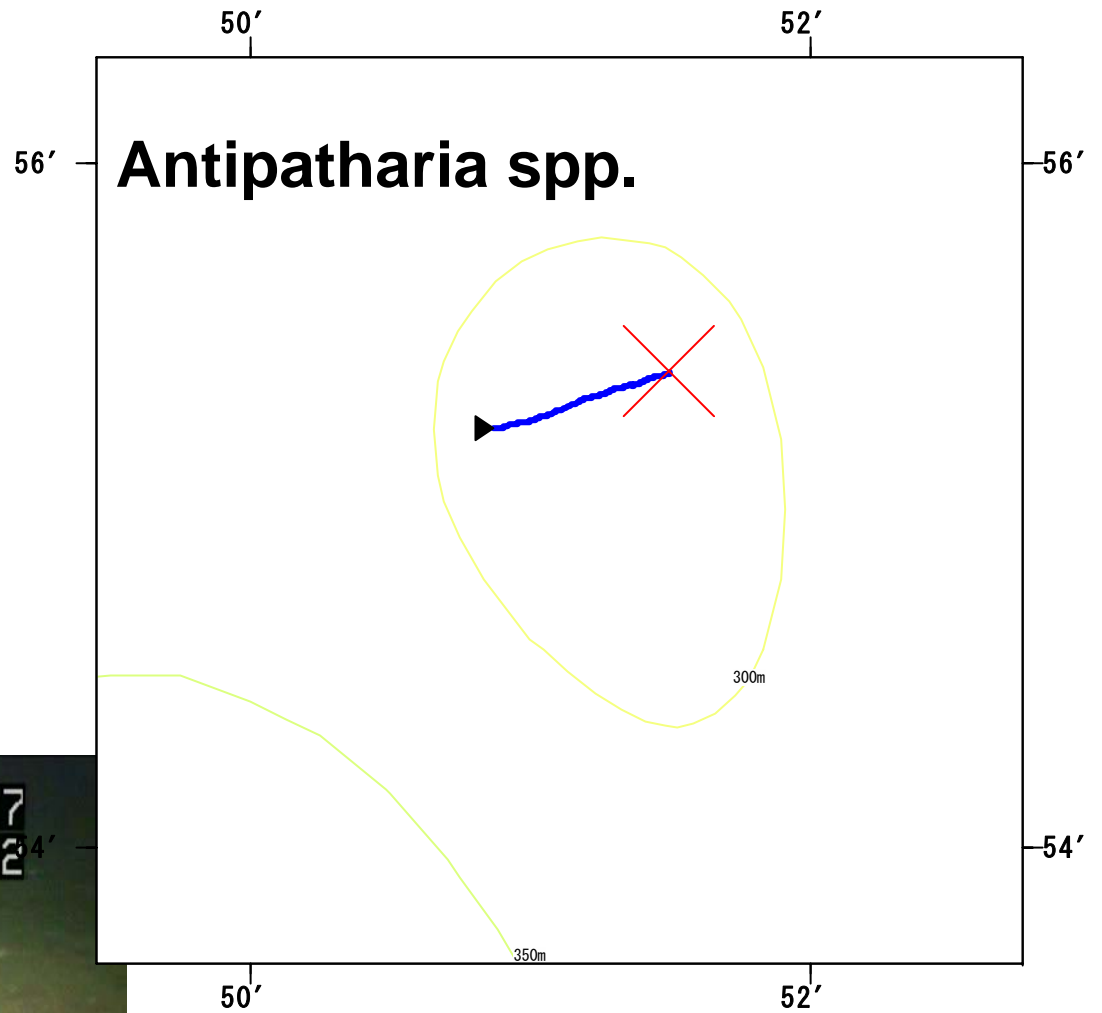
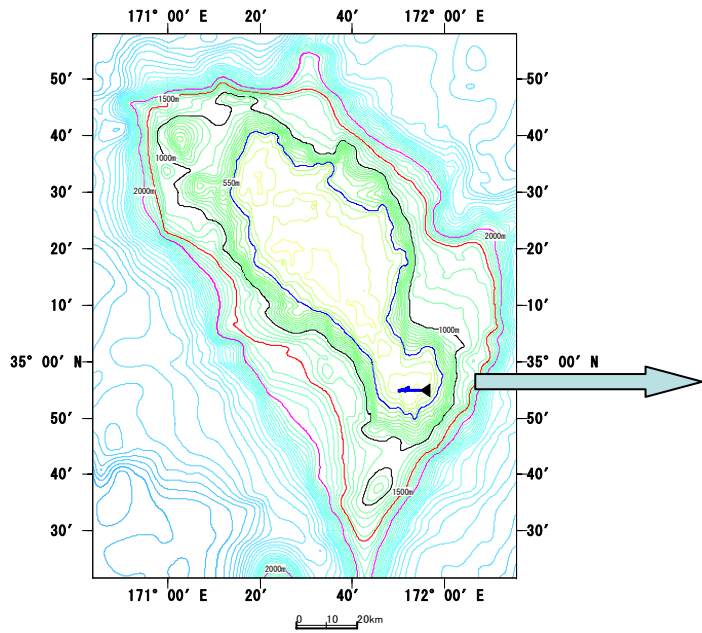
Alcyonacea spp.

St12



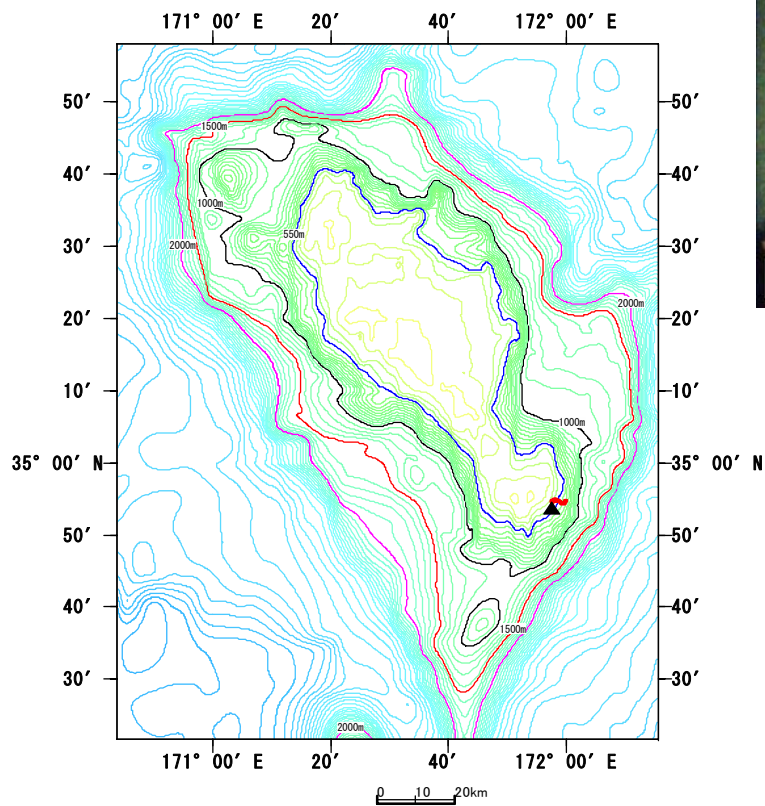


X indicate the location that many Gorgonacea spp. were observed.



X indicate the location that many *Antipatharia* spp. were observed.

Koko Seamount St11



Date: 2006/9/17

Position: 34-54.90N, 171-57.38E

Observed distance: 1.88241km



Ex. *Antipatharia* sp.

Antipatharia spp.



Ex. *Corallium* spp.

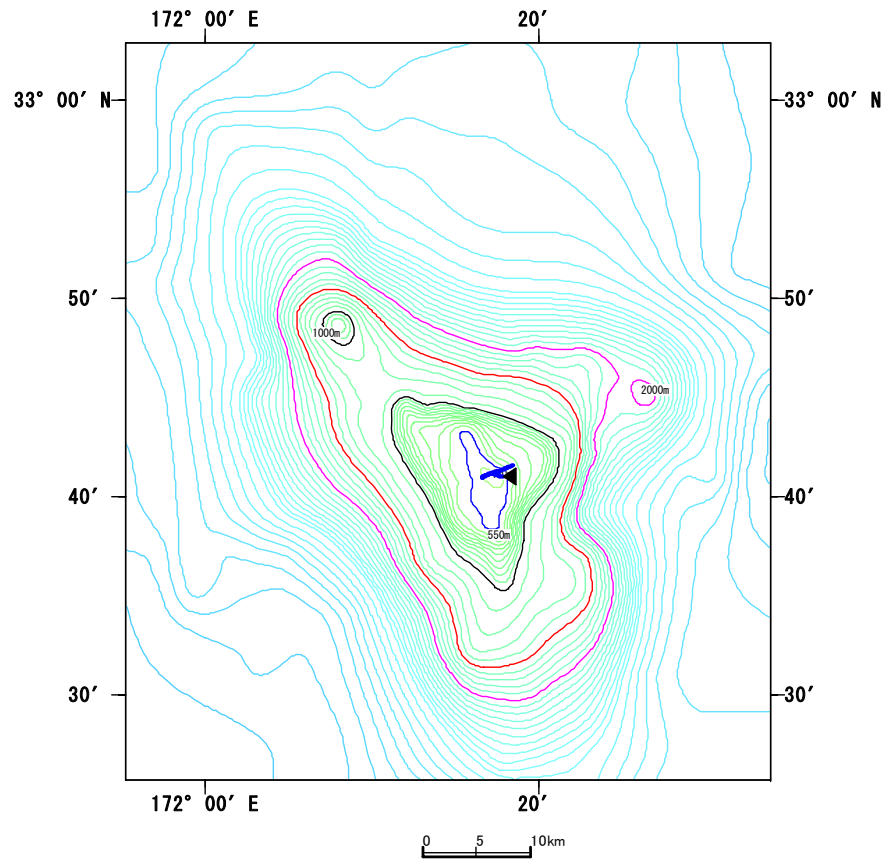
Scleractinia spp.



Ex. *Gorgonaria* sp.

Gorgonacea spp.

Yuryaku Seamount St10



Date: 2006/9/14

Position: 32-41.09N, 172-17.80E

Observed distance: 0.98863km

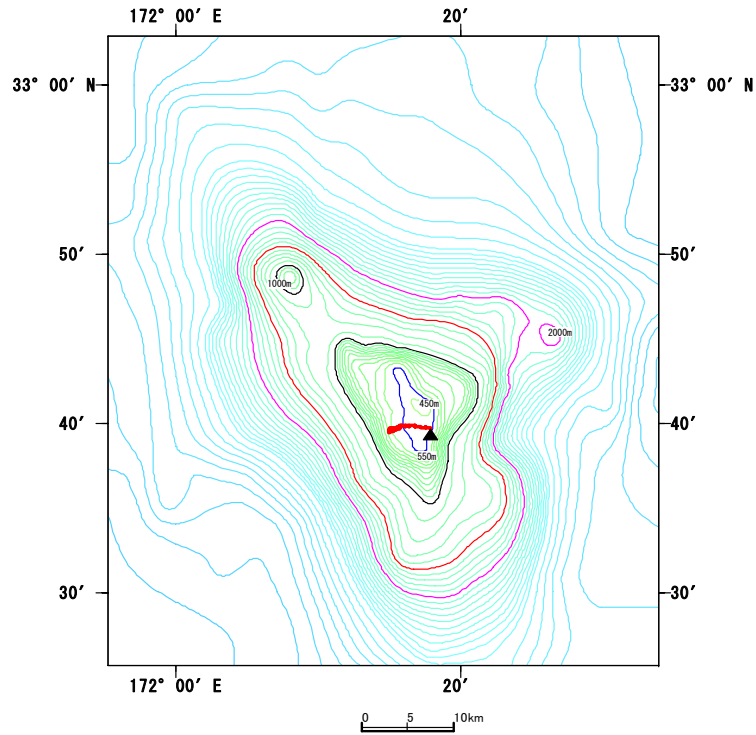


Gorgonacea sp.



Antipatharia sp.

Yuryaku Seamount St9



Date: 2006/9/14

Position: 32-39.84N, 172-17.49E

Observed distance: 2.36158km



Ex. *Isidella* sp.
Gorgonacea spp.



Ex. Antipathidae sp.
Antipatharia spp.



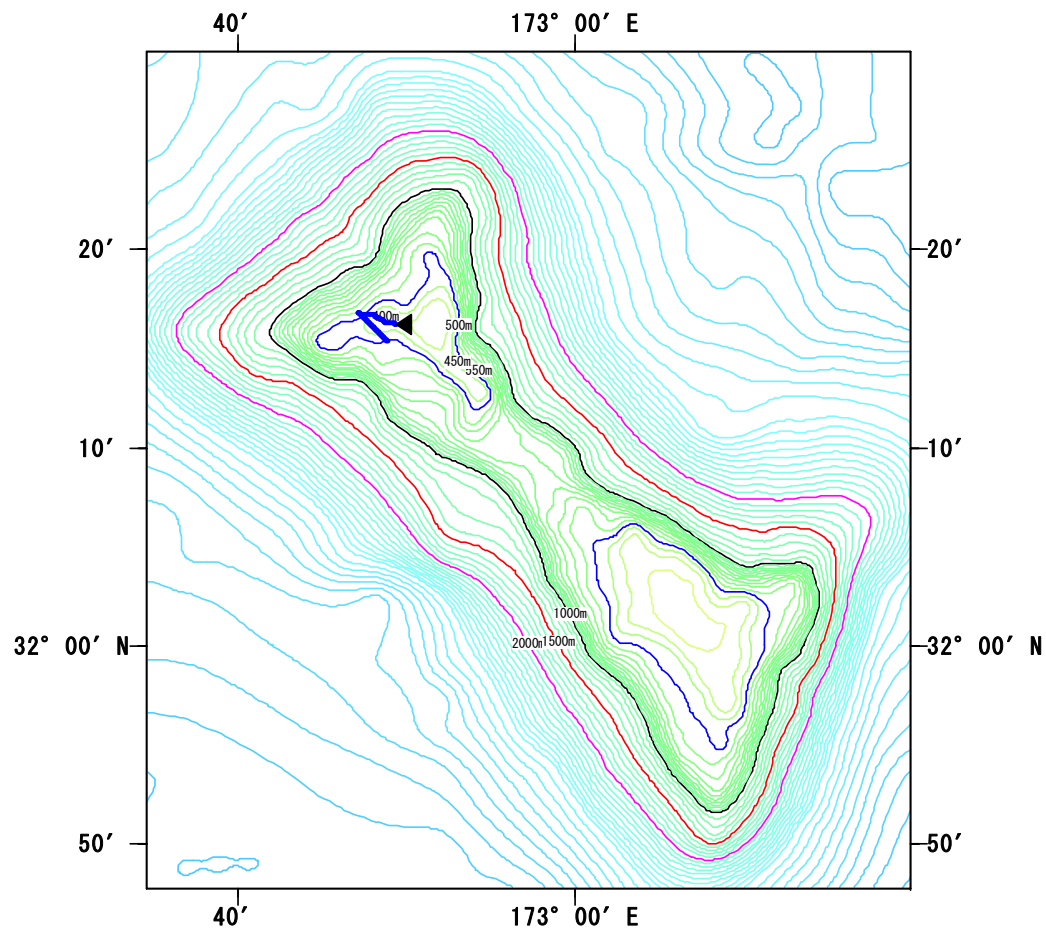
Ex. *Paraminabea* sp.
Alcyonacea spp.



イサノゴ目

Scleractinia sp.

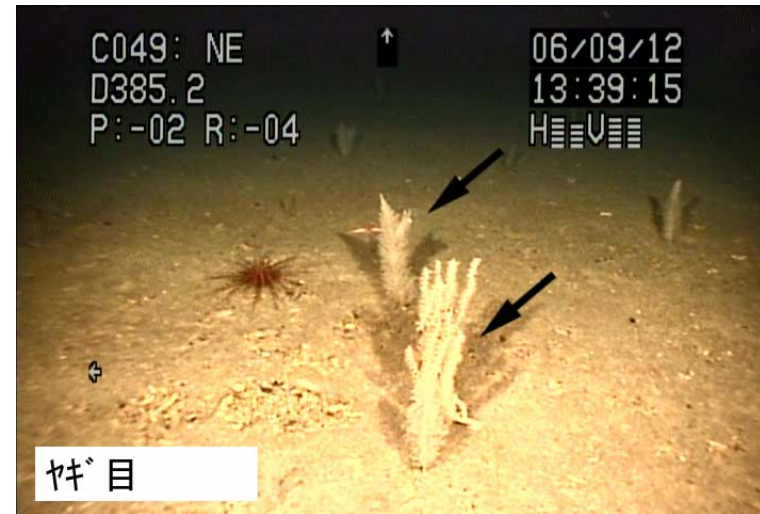
Kammu Seamount St8



Date: 2006/9/12

Position: 32-16.33N, 172-49.06E

Observed distance: 1.326km

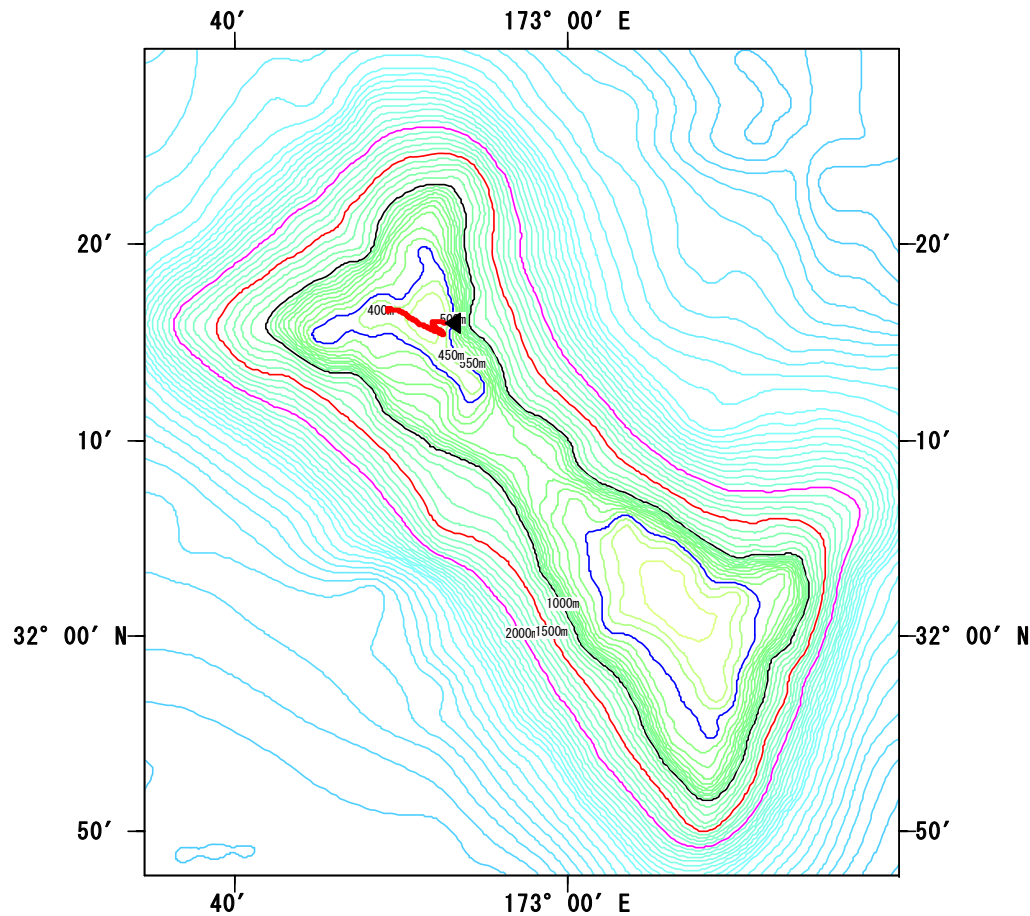


Gorgonacea spp.



Ex. *Flabellum* sp.
Scleractinia sp.

Kammu Seamount St7



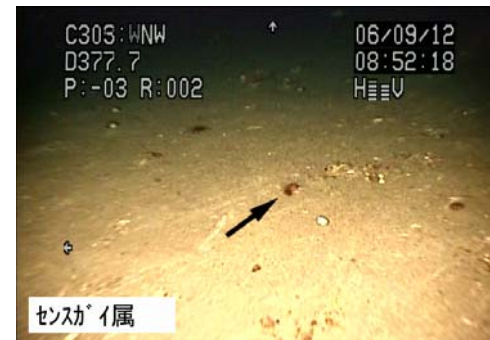
Date: 2006/9/12

Position: 32-15.48N, 172-52.49E

Observed distance: 4.09170km



Ex. *Isidella* sp.
Gorgonacea spp.



Ex. *Flabellum* sp.
Scleractinia sp.



Ex. *Antipatharia* sp
Antipatharia spp.